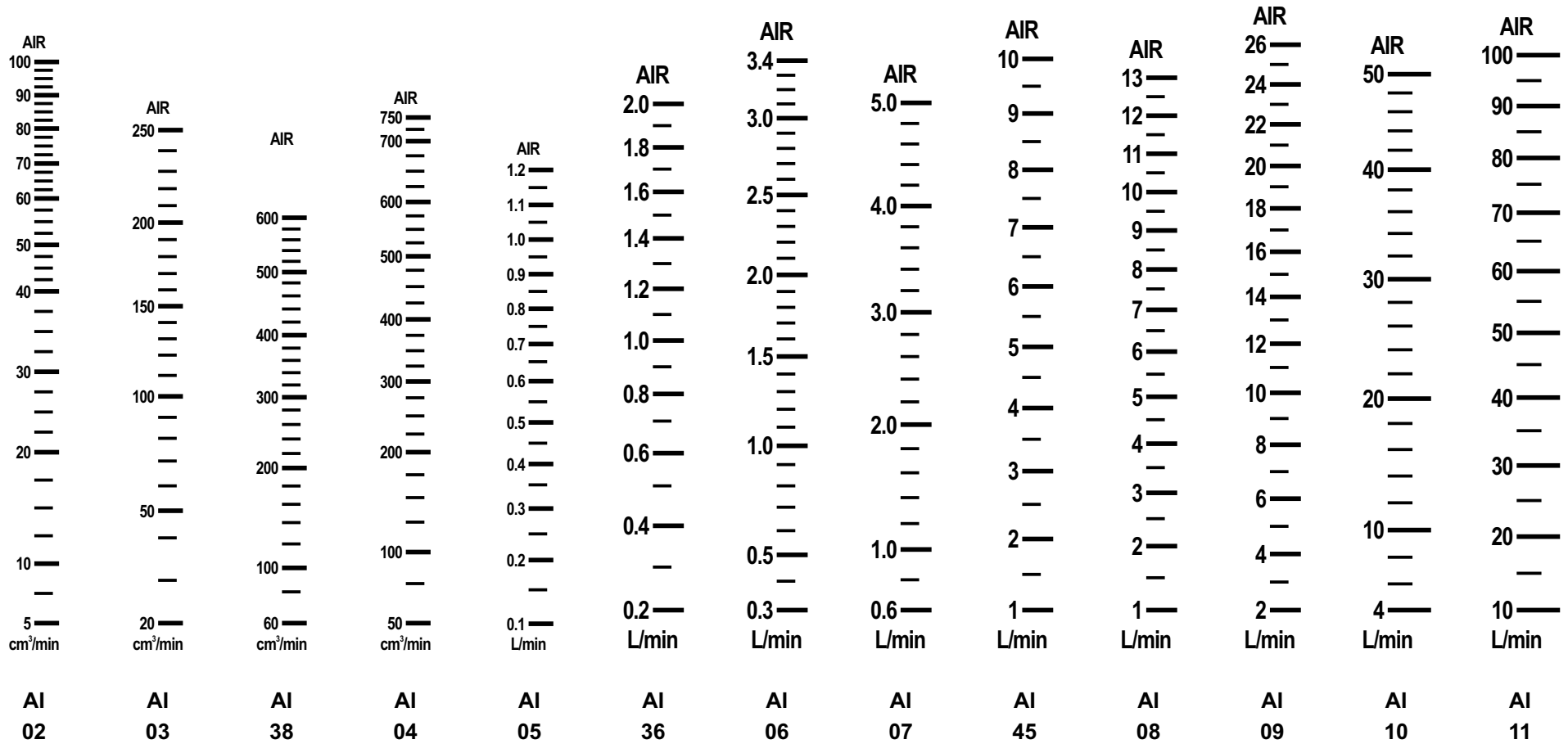
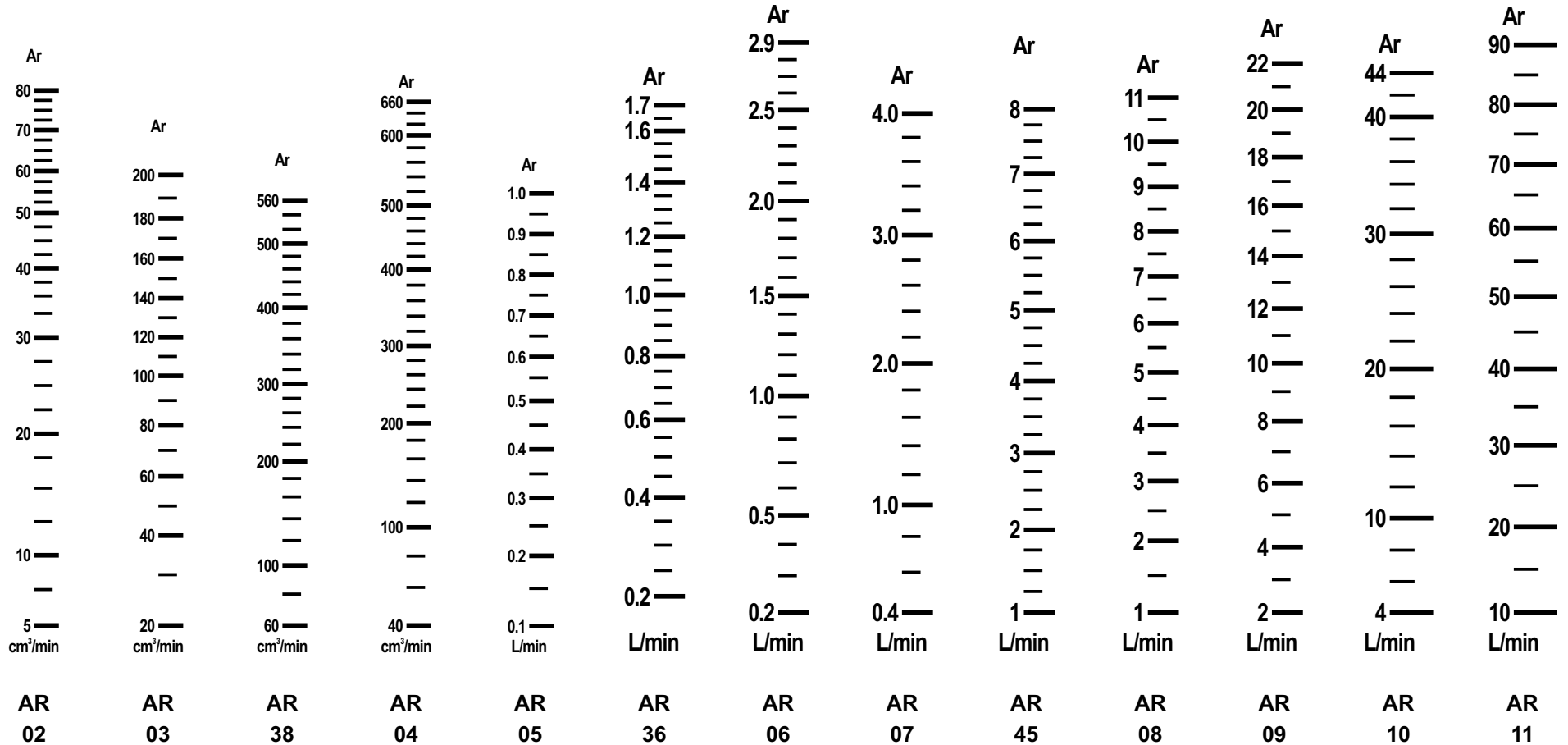


Standard Glass Scale Legends Air [AI**]



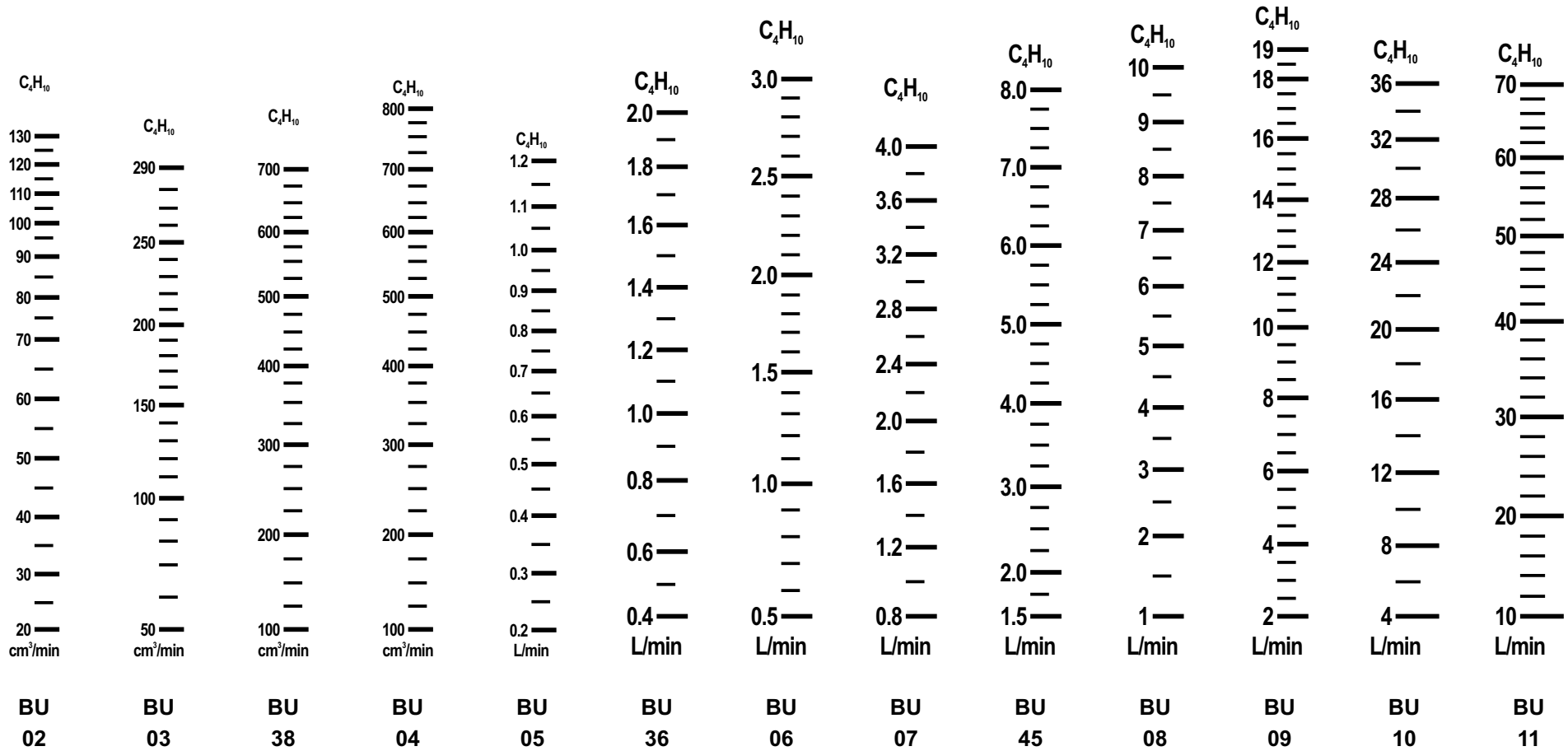
All Standard Scales are based on Operating Conditions of 20°C, 1.01325 bar abs and expressed at ATP (20°C, 1.01325 bar abs)
 All of these Tube & Float combinations can be used in the following frames: Uniflux (Standard Length), Fluxline SH1/2" and LPL 3/8" RH

Standard Glass Scale Legends Argon (Ar) [AR**]



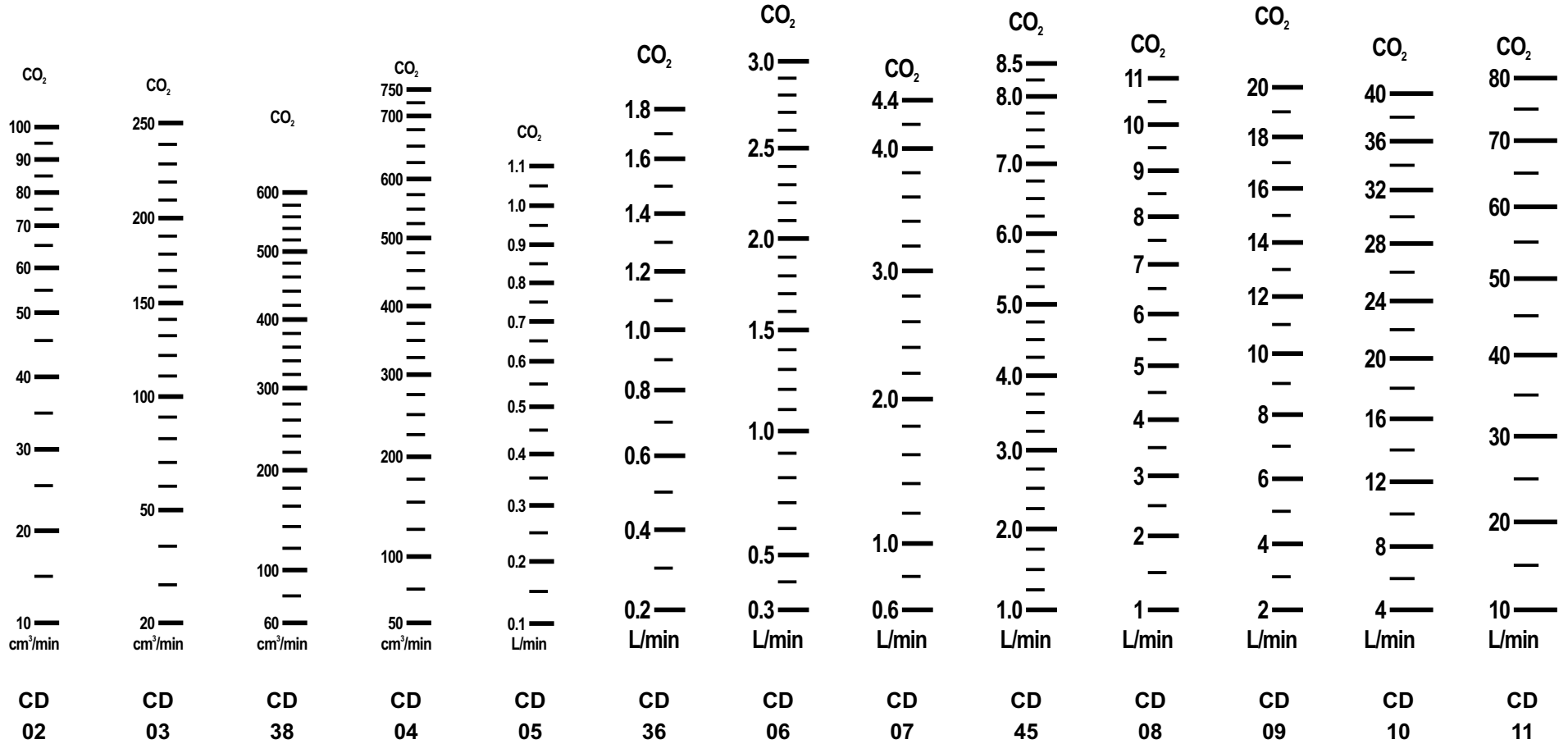
All Standard Scales are based on Operating Conditions of 20°C, 1.01325 bar abs and expressed at ATP (20°C, 1.01325 bar abs)
All of these Tube & Float combinations can be used in the following frames: Uniflux (Standard Length), Fluxline SH1/2" and LPL 3/8" RH

Standard Glass Scale Legends Butane (C₄H₁₀) [BU**]



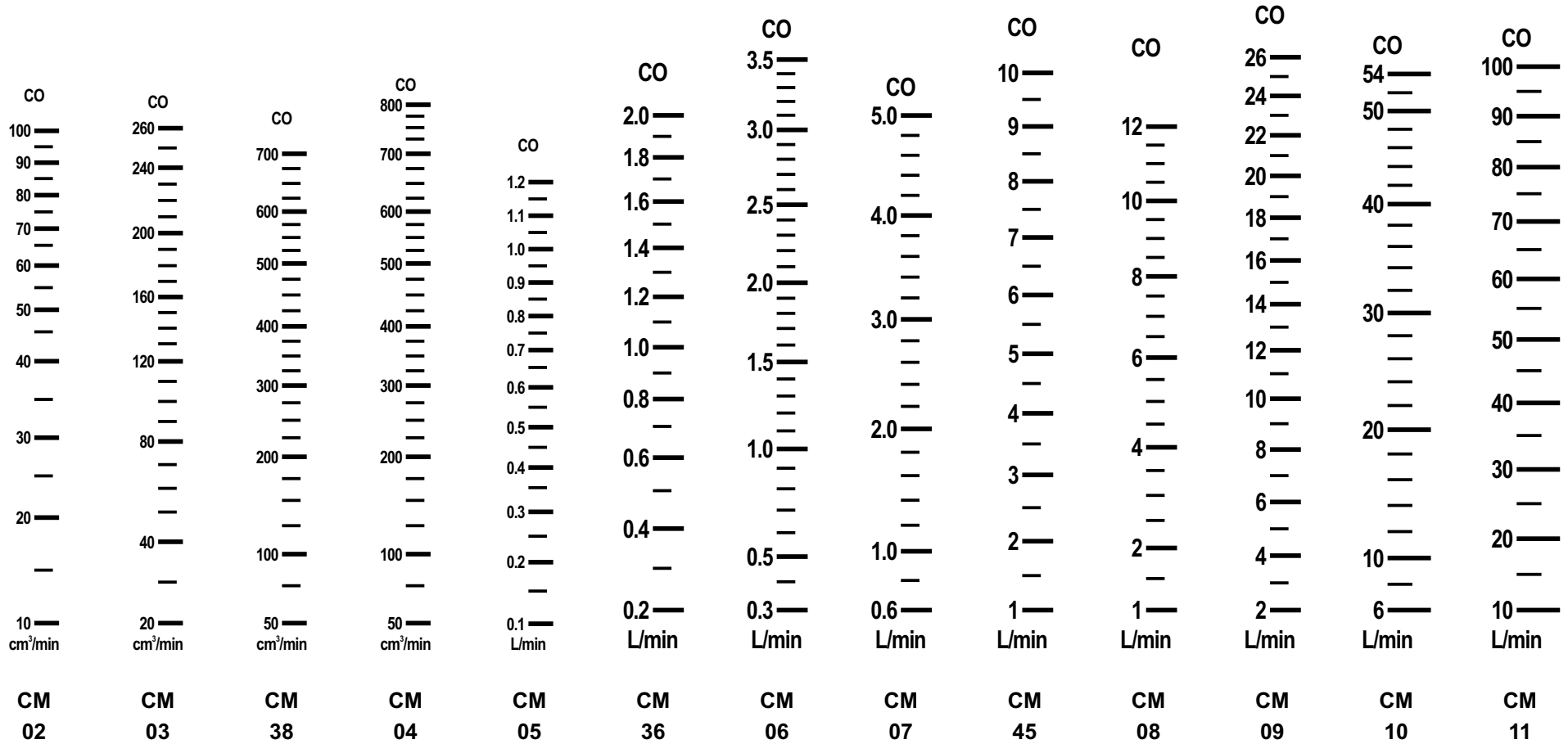
All Standard Scales are based on Operating Conditions of 20°C, 1.01325 bar abs and expressed at ATP (20°C, 1.01325 bar abs)
All of these Tube & Float combinations can be used in the following frames: Uniflux (Standard Length), Fluxline SH1/2" and LPL 3/8" RH

Standard Glass Scale Legends Carbon Dioxide (CO₂) [CD**]



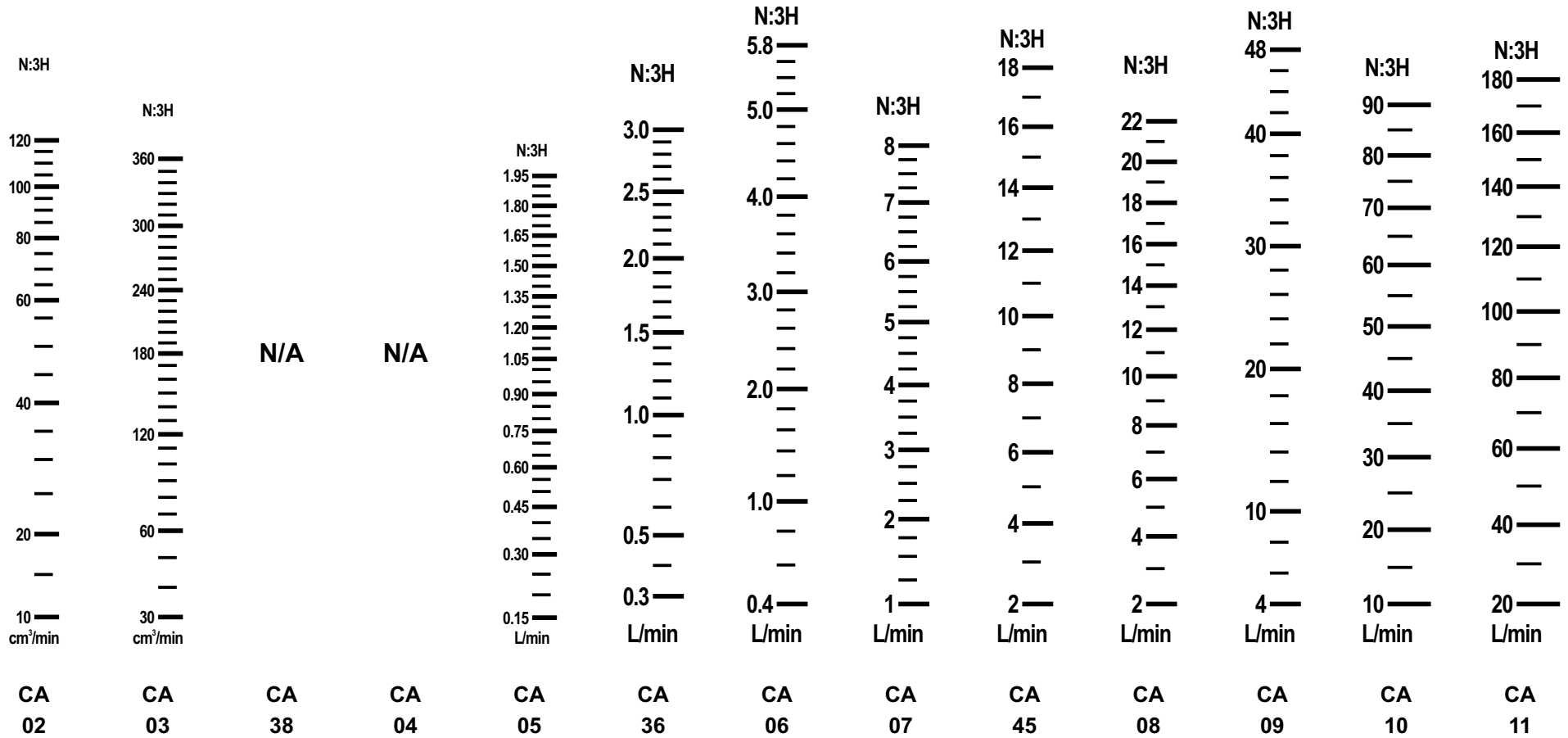
All Standard Scales are based on Operating Conditions of 20°C, 1.01325 bar abs and expressed at ATP (20°C, 1.01325 bar abs)
 All of these Tube & Float combinations can be used in the following frames: Uniflux (Standard Length), Fluxline SH1/2" and LPL 3/8" RH

Standard Glass Scale Legends Carbon Monoxide (CO) [CM**]



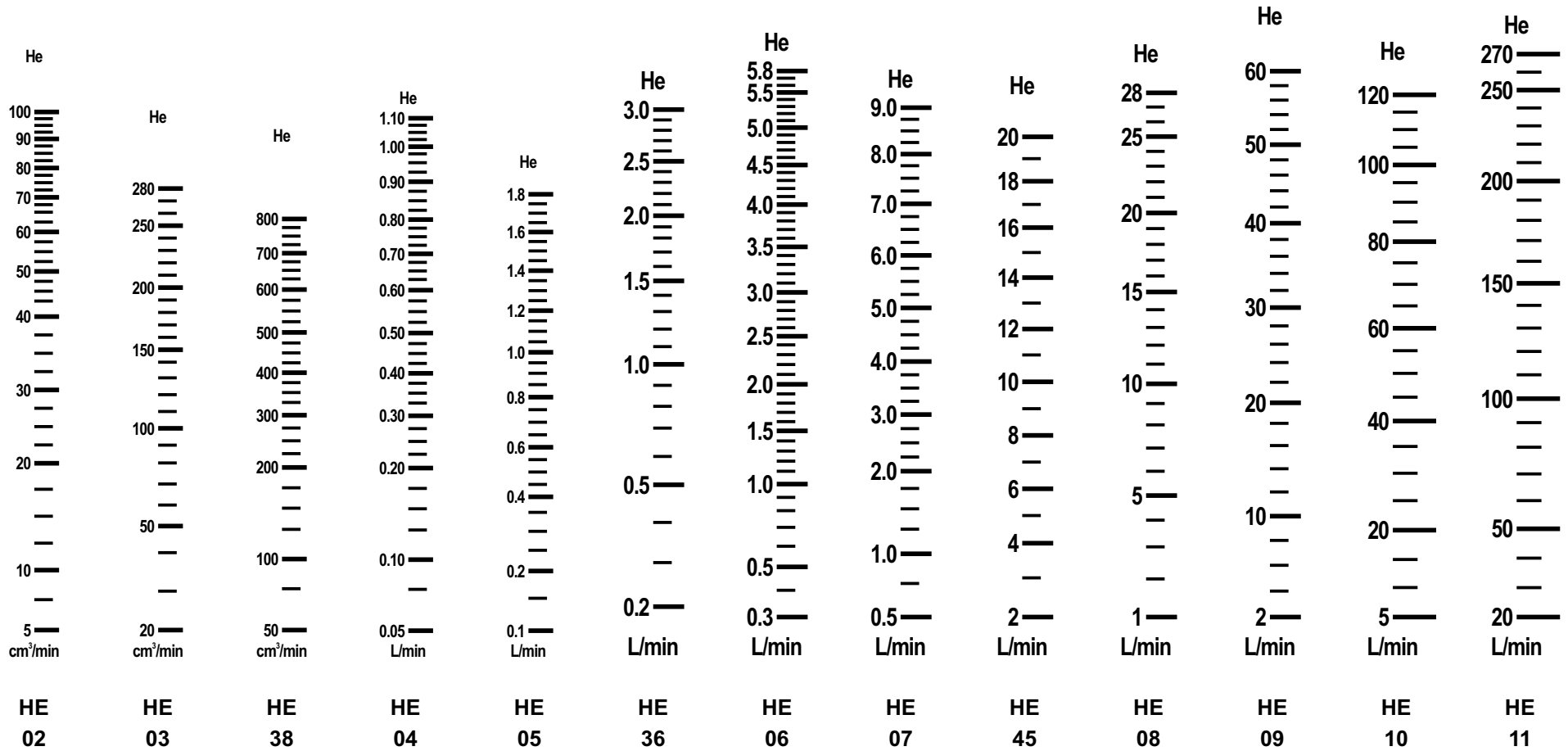
All Standard Scales are based on Operating Conditions of 20°C, 1.01325 bar abs and expressed at ATP (20°C, 1.01325 bar abs)
All of these Tube & Float combinations can be used in the following frames: Uniflux (Standard Length), Fluxline SH1/2" and LPL 3/8" RH

Standard Glass Scale Legends Cracked Ammonia (N:3H) [CA**]



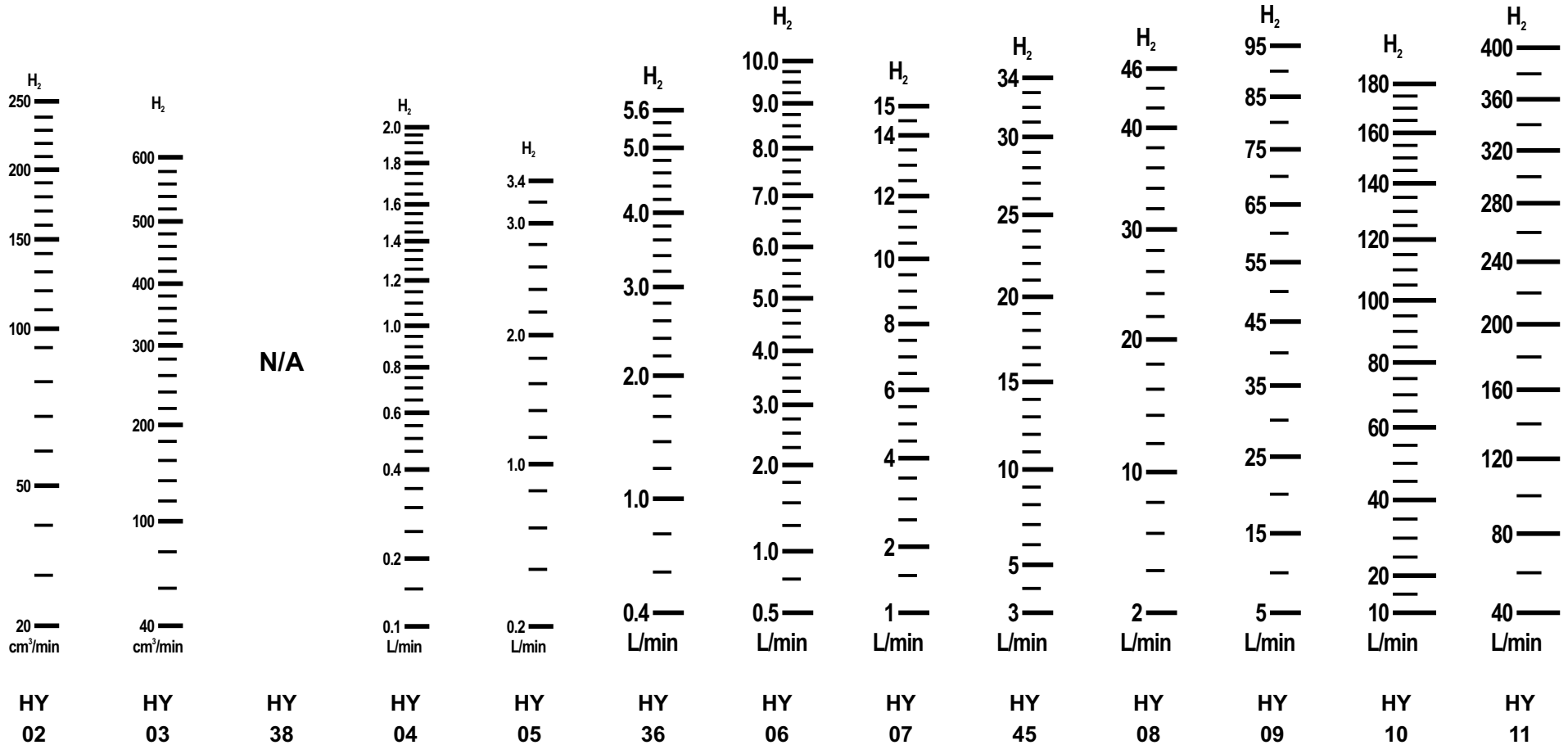
All Standard Scales are based on Operating Conditions of 20°C, 1.01325 bar abs and expressed at ATP (20°C, 1.01325 bar abs)
All of these Tube & Float combinations can be used in the following frames: Uniflux (Standard Length), Fluxline SH1/2" and LPL 3/8" RH

Standard Glass Scale Legends Helium (He) [HE**]



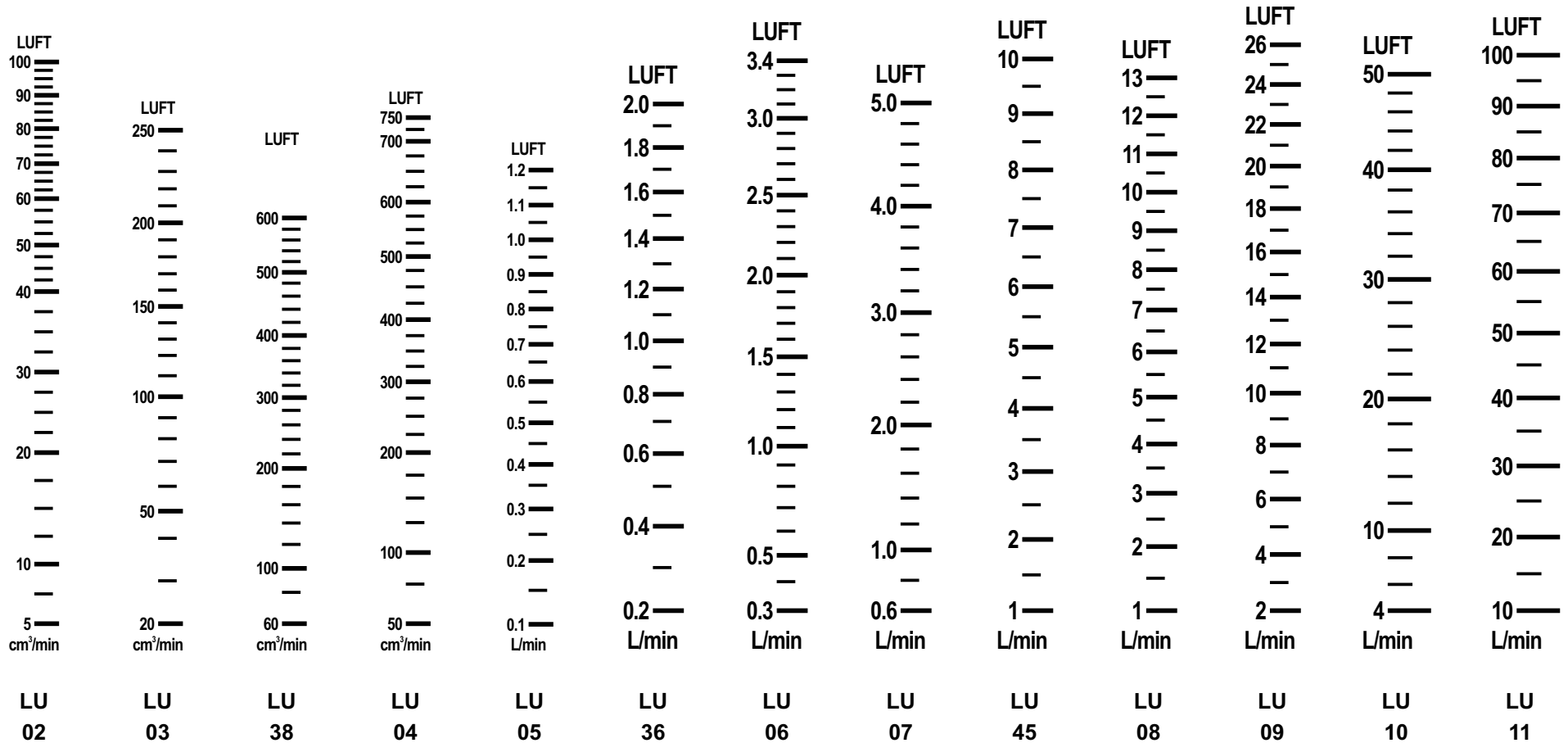
All Standard Scales are based on Operating Conditions of 20°C, 1.01325 bar abs and expressed at ATP (20°C, 1.01325 bar abs)
 All of these Tube & Float combinations can be used in the following frames: Uniflux (Standard Length), Fluxline SH1/2" and LPL 3/8" RH

Standard Glass Scale Legends Hydrogen (H₂) [HY**]



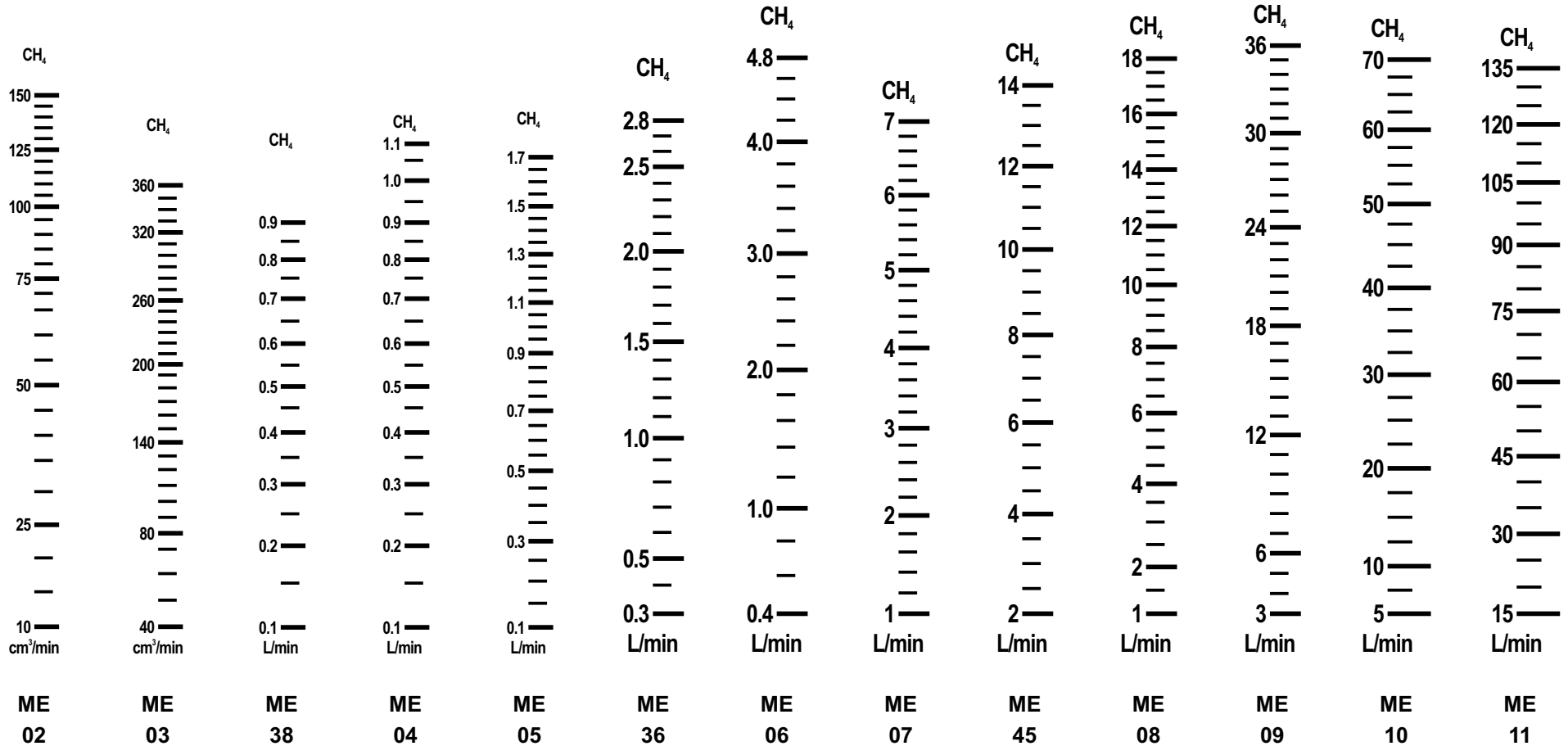
All Standard Scales are based on Operating Conditions of 20°C, 1.01325 bar abs and expressed at ATP (20°C, 1.01325 bar abs)
 All of these Tube & Float combinations can be used in the following frames: Uniflux (Standard Length), Fluxline SH1/2" and LPL 3/8" RH

Standard Glass Scale Legends Luft [LU**]



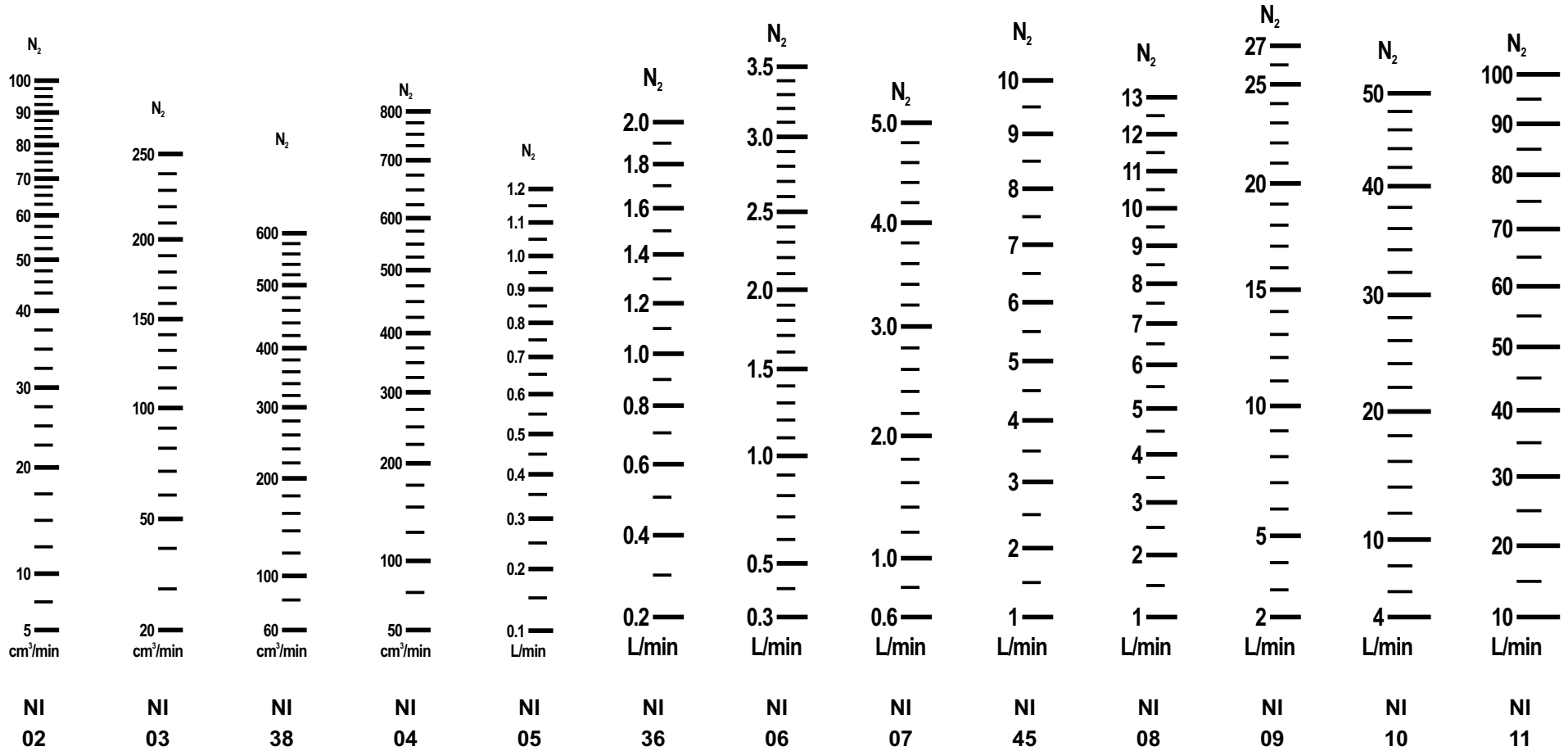
All Standard Scales are based on Operating Conditions of 20°C, 1.01325 bar abs and expressed at ATP (20°C, 1.01325 bar abs)
 All of these Tube & Float combinations can be used in the following frames: Uniflux (Standard Length), Fluxline SH1/2" and LPL 3/8" RH

Standard Glass Scale Legends Methane (CH₄) [ME**]



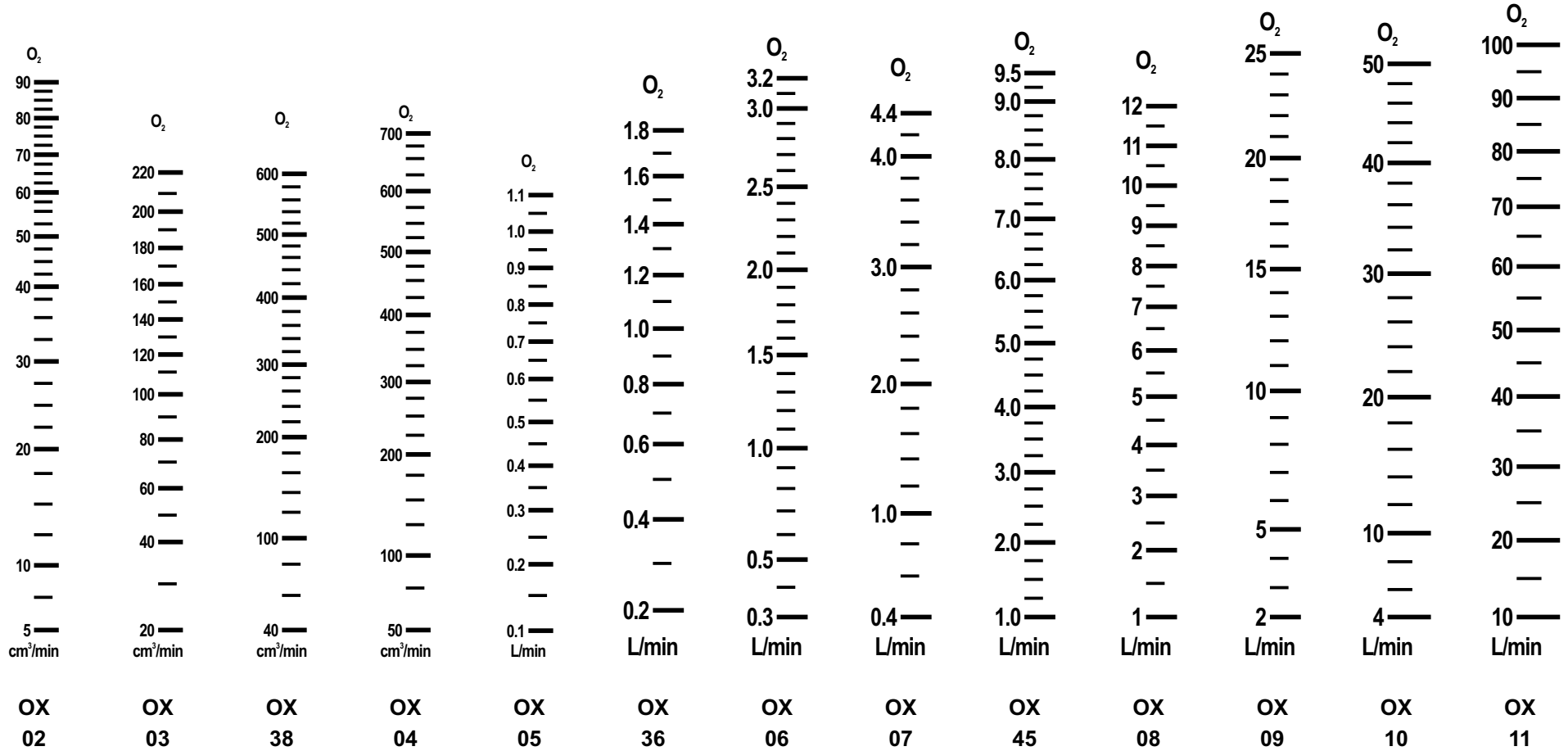
All Standard Scales are based on Operating Conditions of 20°C, 1.01325 bar abs and expressed at ATP (20°C, 1.01325 bar abs)
All of these Tube & Float combinations can be used in the following frames: Uniflux (Standard Length), Fluxline SH1/2" and LPL 3/8" RH

Standard Glass Scale Legends Nitrogen (N₂) [NI**]



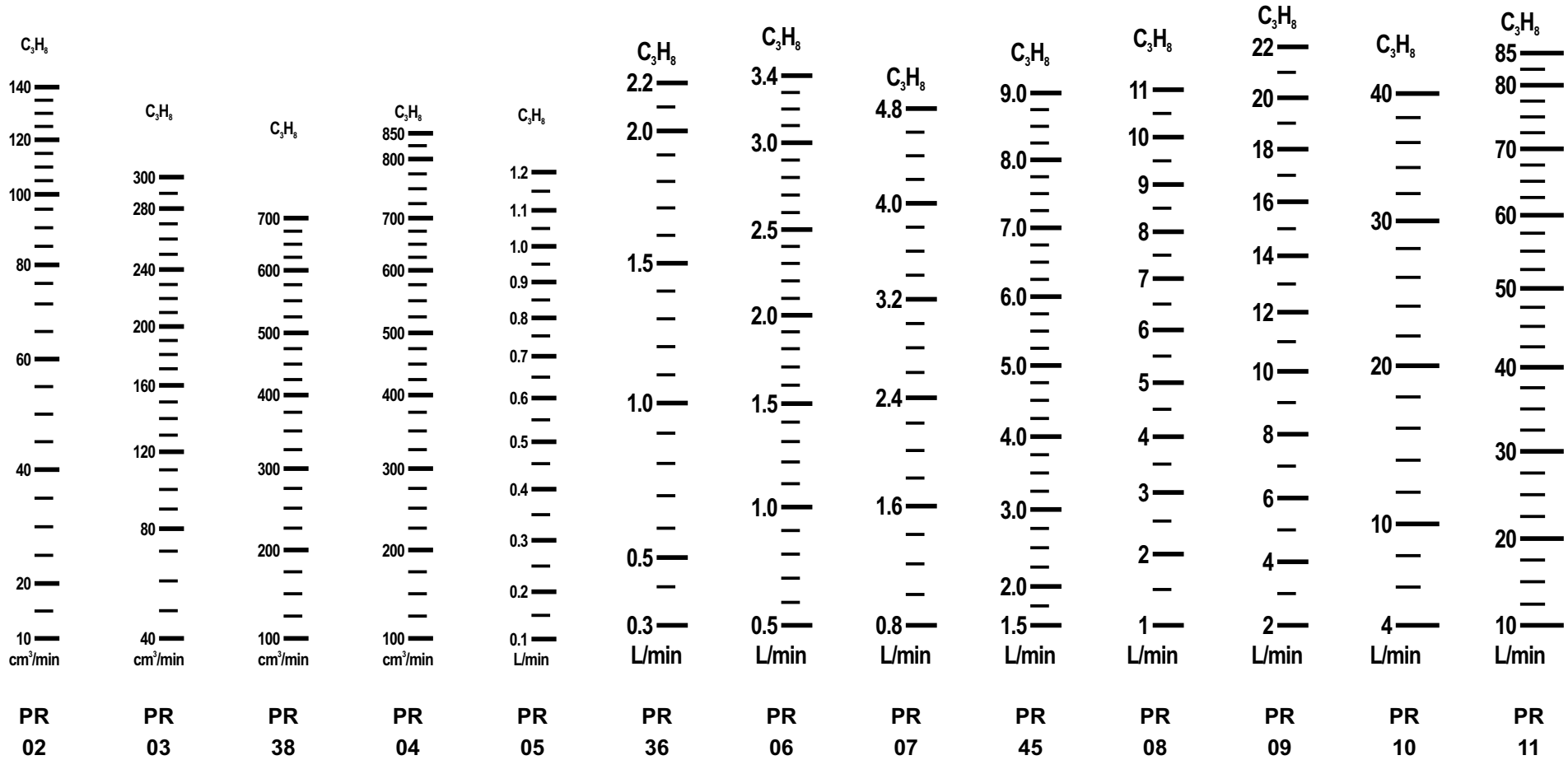
All Standard Scales are based on Operating Conditions of 20°C, 1.01325 bar abs and expressed at ATP (20°C, 1.01325 bar abs)
All of these Tube & Float combinations can be used in the following frames: Uniflux (Standard Length), Fluxline SH1/2" and LPL 3/8" RH

Standard Glass Scale Legends Oxygen (O₂) [OX**]



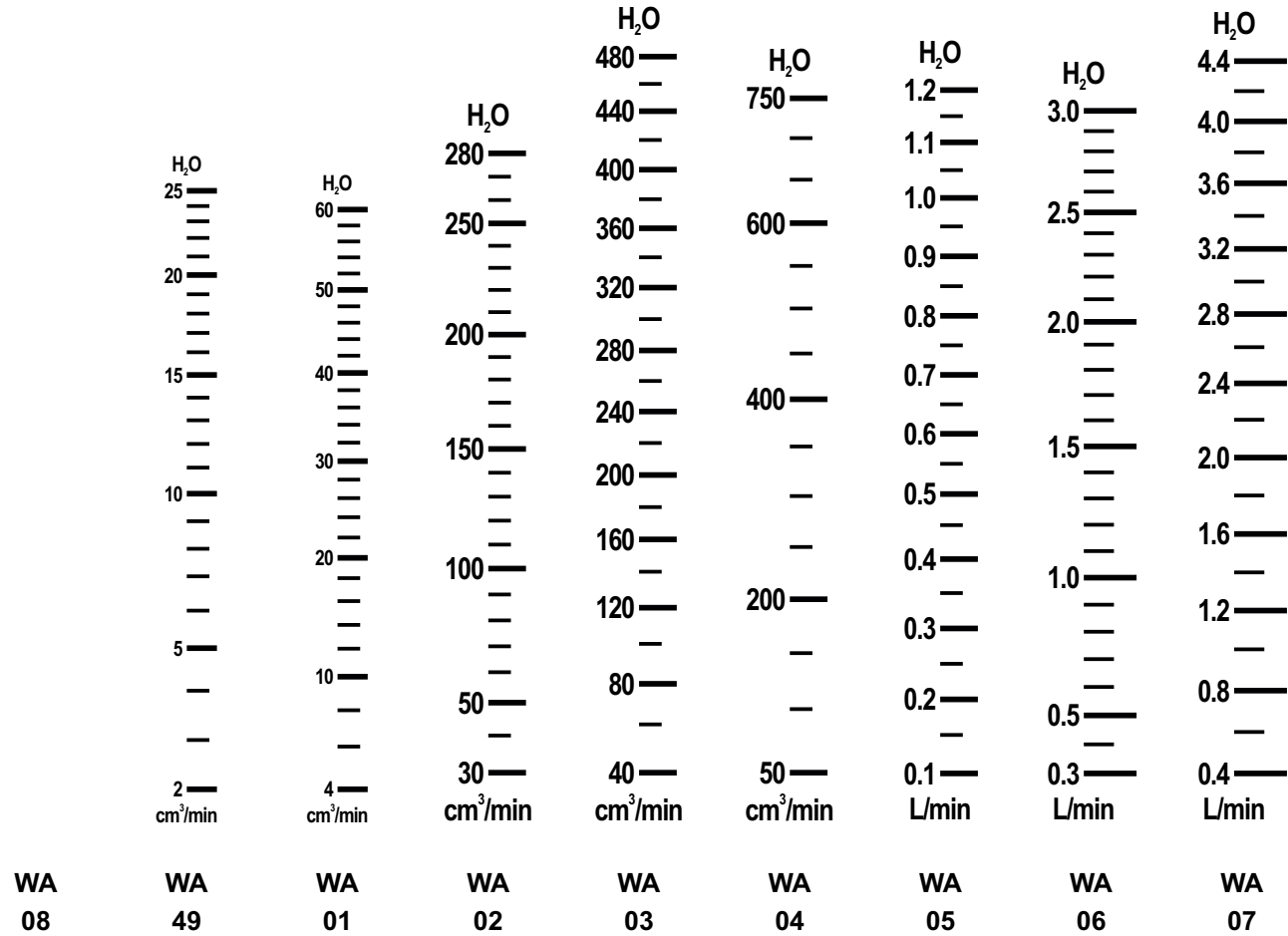
All Standard Scales are based on Operating Conditions of 20°C, 1.01325 bar abs and expressed at ATP (20°C, 1.01325 bar abs)
 All of these Tube & Float combinations can be used in the following frames: Uniflux (Standard Length), Fluxline SH1/2" and LPL 3/8" RH

Standard Glass Scale Legends Propane (C₃H₈) [PR**]



All Standard Scales are based on Operating Conditions of 20°C, 1.01325 bar abs and expressed at ATP (20°C, 1.01325 bar abs)
 All of these Tube & Float combinations can be used in the following frames: Uniflux (Standard Length), Fluxline SH1/2" and LPL 3/8" RH

Standard Glass Scale Legends Water (H₂O) [WA**]



All Standard Scales are based on Operating Conditions of 20°C

All of these Tube & Float combinations can be used in the following frames: Uniflux (Standard Length), Fluxline SH1/2" and LPL 3/8" RH